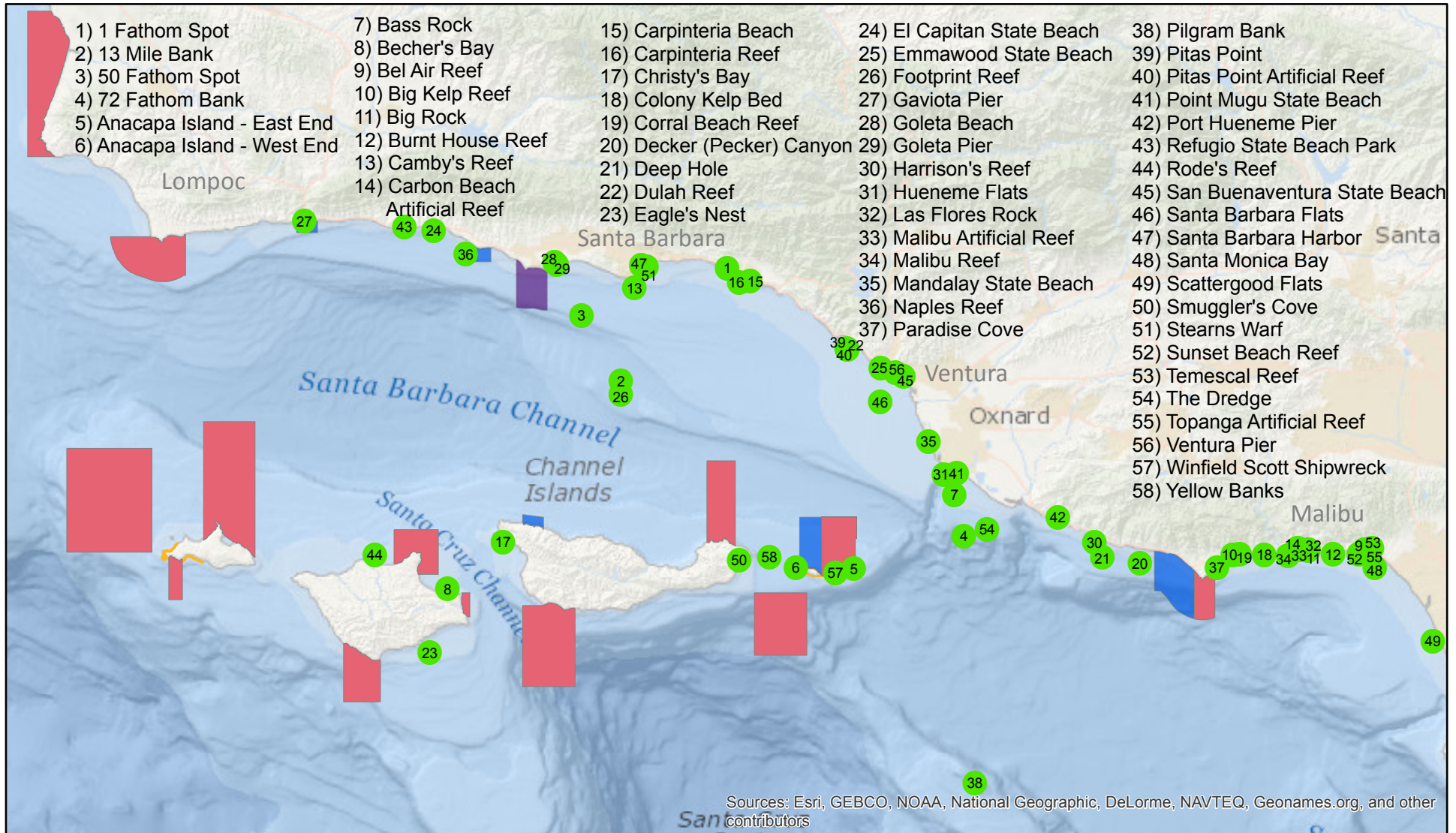


POPULAR FISHING SPOTS IN THE SANTA BARBARA CHANNEL



- Popular Fishing Spots
- Marine Protected Areas**
 - Red: Marine Reserves (No take)
 - Purple: Marine Conservation Areas (No Take)
 - Yellow: Special Closures (No Take)
 - Blue: Marine Conservation Areas (Limited take)

Questions about Marine Protected Areas?

Santa Barbara CHANNELKEEPER®

Call: 805-563-3377 or E-mail: info@sbck.org
www.sbck.org

Sources:
 Department of Fish and Wildlife, fishingnetwork.net,
pierfishing.com, saltwatersportsman.com, and
socaloceanfishing.com

Map created by Santa Barbara Channelkeeper
 August 2013