

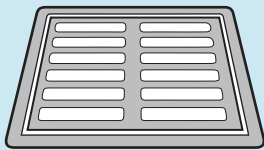
# Are You Watershed Wise?

*The story of how trash flows from our hands to the ocean, and the underground path it takes.*



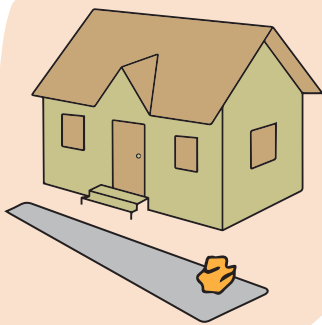
## RAINFALL

When it rains, stormwater runoff collects trash and pollutants like pesticides, heavy metals, cigarettes, and animal waste from our city streets.



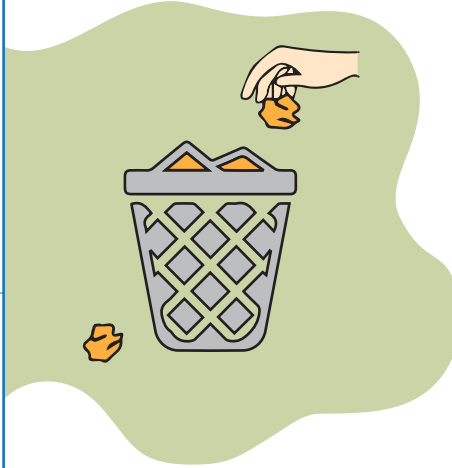
## THROUGH OUR TOWNS

A network of storm pipes carries stormwater runoff from our streets and yards into nearby waterbodies.



## LOST LITTER

When people litter or trash blows away, it can enter a gutter or storm drain.



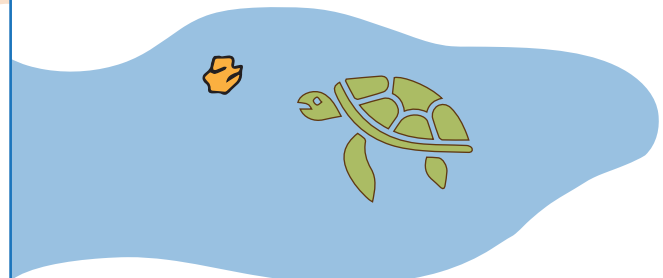
## JOURNEY TO THE SEA

It flows through storm drains.



## TO MARINE LIFE

These storm pipes prevent flooding, but they carry pollution from the land to the water. In the ocean, the sun's rays and heat can break down trash into smaller pieces that can be mistaken as food by marine life.

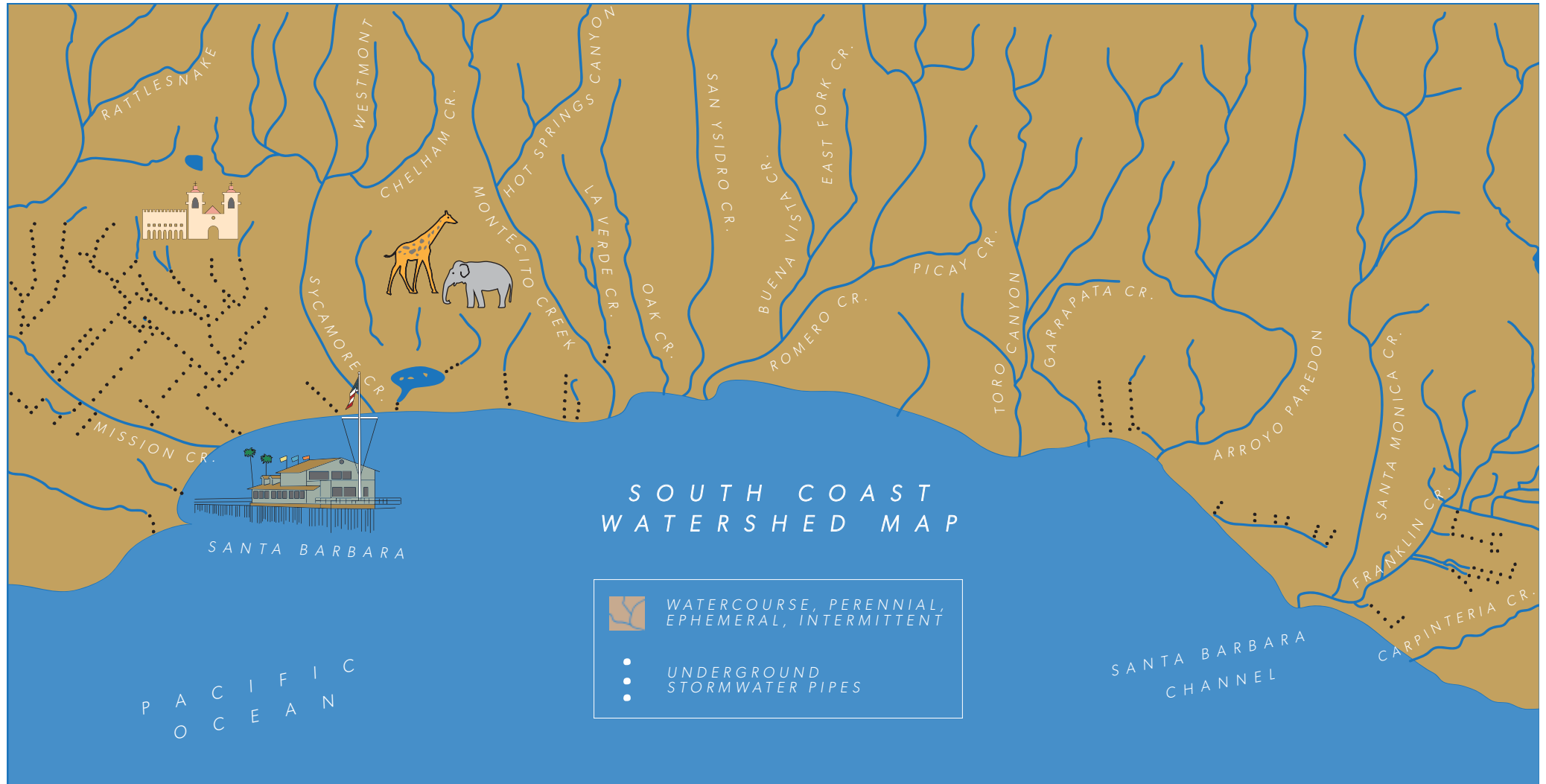


## A WORLD UNDERGROUND

This map shows a network of storm pipes, and the land that drains into it. This type of network exists underneath all of our cities. Water from this network eventually makes its way to the ocean.

## FROM LAND TO SEA

Stormwater runoff carries pollutants from the land into surface waters. This pollution degrades water quality. It can also threaten aquatic wildlife and put human health at risk.



We all live in a watershed, and we all have a role to play to protect our water quality. You can help in your community by picking up trash and keeping your neighborhood, creeks, and beaches clean.

