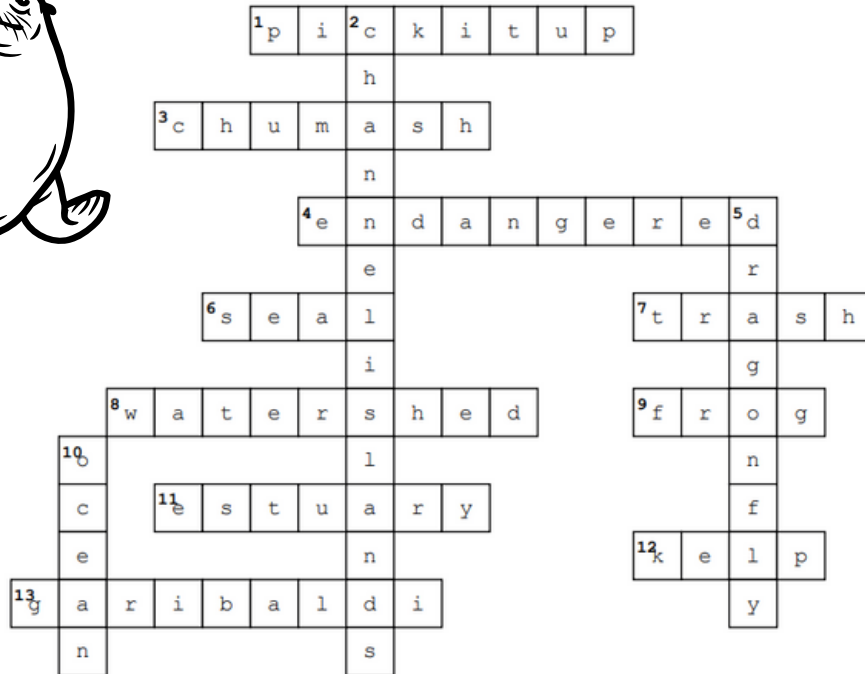
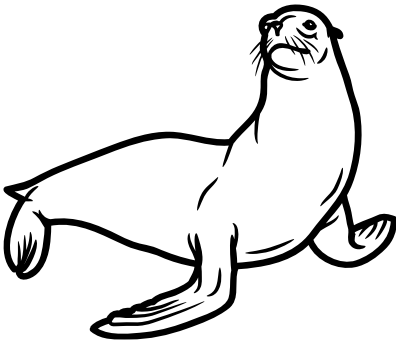


Activity Book

Puzzle Solutions

Soluciones de rompecabezas

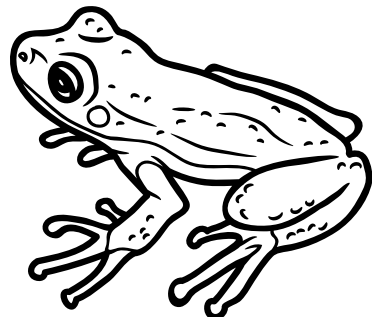


Across

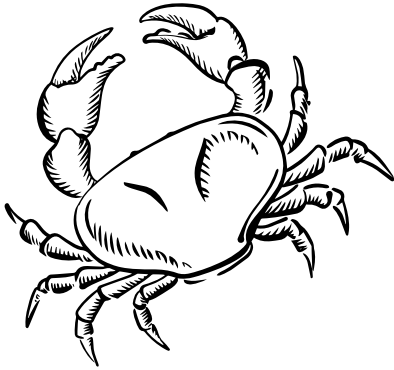
1. How can you help prevent trash from reaching the ocean? (Three words)
3. The Channel Islands are the ancestral lands of the ____.
4. When a species is at risk of extinction, it is considered ____.
6. A marine mammal that calls the kelp forest home.
7. As water flows across land on its way to the ocean it can pick up ____.
8. An area of land that drains to a common waterway.
9. An amphibian that says "ribbitt."
11. Where creeks and streams meet the ocean.
12. A brown marine algae that grows close to shore.
13. California's official state fish.

Down

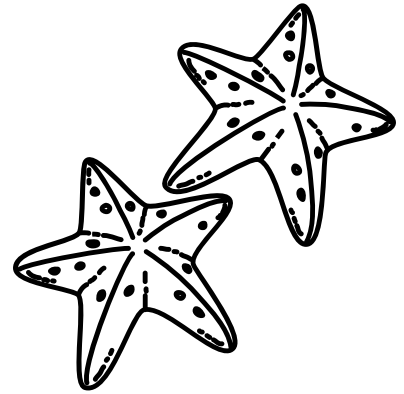
2. The name for the bodies of land in the Santa Barbara Channel.
5. A flying insect that frequents creeks and streams.
10. In coastal California, creeks lead to the ____.



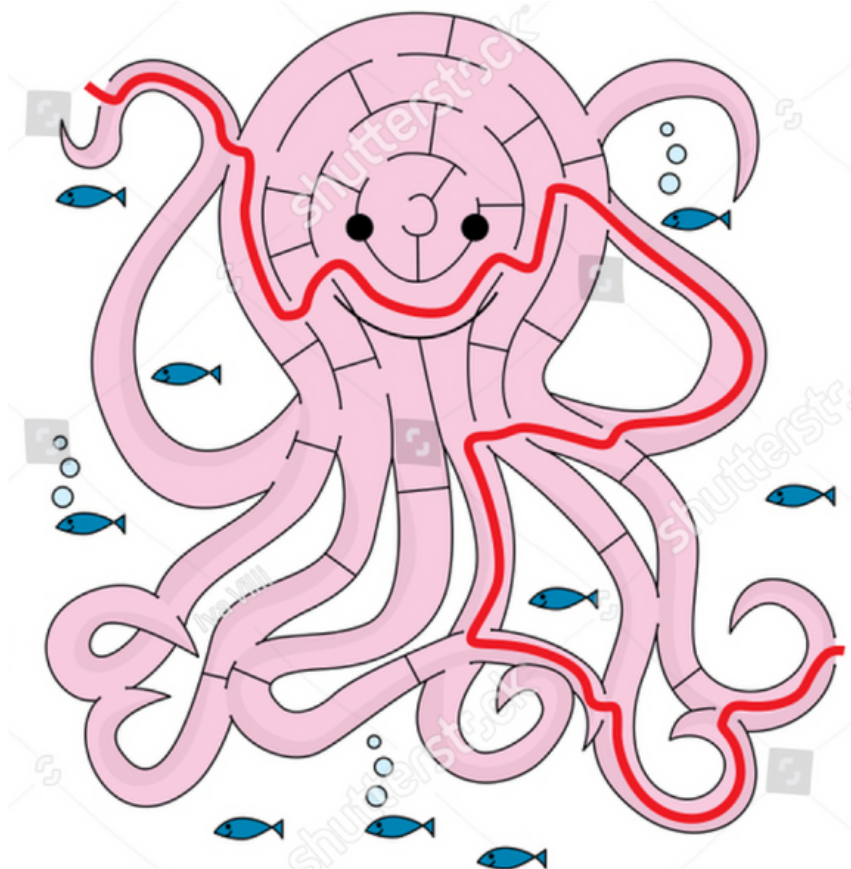
Word Scramble Answers



crab
seastar
sealion
anemone
rockfish
garibaldi
dolphin
leopardshark
brittlestar
lobster



Maze Solution



Word Search Answers

.	R	.	.	Q	.	C	
.	.	A	.	.	U	.	U	.	.	.	B	A	S	U	R	A	R
.	.	.	N	.	.	E	.	E	I
.	.	.	.	A	.	.	L	.	N	A
.	C	H	U	M	A	S	H	P	.	C	C
.	O	O	A	H
.	C	U
T	R	U	C	H	A	S	T	E	E	L	H	E	A	D	.	.	E
.	A	.	.	.	L
.	R	N	.	.	O
.	E	S	T	U	A	R	I	O	O	.	O	.
.	F	O	C	A	.	.	.

